



BROC Head Start

Report to the Community 2011 - 2012

Grant #
04CH2524

Age-Actual Enrollment

3 year olds----96
4 year olds---111

Total – 207

Funded Enrollment---183
Average Daily Attendance 81%
Average Monthly Enrollment – 183

Number of NC Pre-K Slots
Ashe-----16
Wilkes-----6

Primary Language

English-----162
Spanish-----45

Enrollment by Race

White-----180
Black-----16
Multi-Racial-----11

Enrollment by Ethnicity

- Hispanic 57
- Non-Hispanic 150

Center Information

5 Centers (10 Classrooms)
5 Star Licenses -5

Facility Types

School Systems-----0
Community Buildings 1
Agency Owned Centers....4 (3 of which are modular units)

Child Screenings

Developmental – 197

Hearing – 187

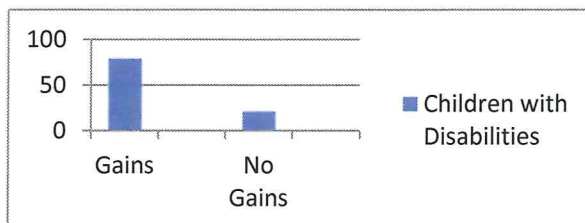
Speech – 196

Vision – 191



BROC Head Start is a federally funded child development program designed to prepare disadvantaged children for kindergarten and link families to services and education that will promote child and family success. Counties served are Alleghany, Ashe, and Wilkes for families who meet income guidelines. No fees are charged.

Children with Disabilities



Twenty-seven children (15% of enrollment) were identified with disabilities during the program year. Top issues identified were developmental delay and speech/language impairments.

79% made gains and 21% had no gains throughout their enrollment period. During analysis of this area it was determined that the following obstacles prevented the children with disabilities from reaching all of the goals:

- Attendance is often sporadic; child is absent from center on therapy day;
- Field trips may have been scheduled on child's therapy day;
- Children were not diagnosed by IEP evaluation team until late in the program year; and
- Loss of Foster Grandparents and some were on extended medical leave.

Health & Nutrition Services

204 children had up to date physicals

191 children received dental exams. 15 children were identified as needing services. All 15 of those children have completed their treatment. Dental homes were identified for 191 children. All others dropped before exams could be completed, or parents refused services.

199 children enrolled were up to date on immunizations

10 Behavioral health referrals with 10 follow-up's performed, and there were no behavioral health referrals to outside agencies.

204 children had identified medical homes by end of enrollment.

39,796 meals were served this program year: Breakfast-18,393, Lunch-18,588 Snack-2,815

Child & Family Information

Number of Families Served	<u>192</u>
Number on TANF / SSI.....	<u>37</u>
WIC-----	<u>120</u>
Children below Poverty Level	<u>181</u>
Children above Poverty Level	<u>26</u>
Single Parent Families-----	<u>80</u>
Two Parent Families.....	<u>112</u>
Employed-----	<u>125</u>
Unemployed-----	<u>67</u>
In School or Training-----	<u>16</u>
Less than High School-----	<u>103</u>
High School or GED-----	<u>64</u>
Some college-----	<u>22</u>
Bachelor's Degree-----	<u>3</u>

Family Services

- ❖ 155 of the families needed and received intervention services
- ❖ 118 of the families received Emergency/Crisis intervention services for food, shelter & clothing
- ❖ 20 Parent Education Newsletters & Calendars were distributed this year
- ❖ 20 Parent Education Workshops provided in the tri county
- ❖ 124 of the children were transported by Head Start buses

Partners in Service

Wilkes Public Health Dental Clinic
Alleghany Co. Partnership for Children
Appalachian District Health Department
Ashe County Partnership for Children
Wilkes County Partnership for Children
Wilkes Community College
NC Cooperative Extension
N.C Pre-K Program
NC Collaboration Office
Wilkes County Health Department
Ashe County Health Department
Alleghany County Health Department
Arlena Creasman, MH Professional
Wilkes Co. Public School System
Ashe Co. Public School System
Alleghany Public School System
Lab Corp Occupational Testing Services
Nationwide Testing Association
NC DMV-Driver Education Specialist
Head Start Body Start

Fatherhood Activities

Two "Breakfast with Dads" were held at each center this year. A total of six Fatherhood meetings were held. A Family Fishing Event was held for the Lomax center. A Family Bowling Event was held for the Gap Civil center. Overall Fatherhood participation for the year was 55 %.



BROC Head Start

Report to the Community 2011-2012 - pg 2

Grant # 04CH2524

Volunteer Information

Total Number of Volunteers	415
Total Volunteer Hours	9500.75
Total Volunteer Dollars	\$153,553.67

In April each center held a Parent Appreciation Night where each volunteer was recognized and received a certificate for outstanding volunteer service to the Head Start Program during the past year. Special recognition was also given to the centers top volunteers. Congratulations to the centers top volunteers!

Cub Creek Center – Marie Pender	42.5 Hours
Gap Civil Center – Antonia Sanchez	138.5 Hours
Lomax Center – Denise Kennedy	132.25 Hours
N. Wilkesboro Center – Billie Pruitt	176.5 Hours
Sizemore Center – Sandy Worley	98.5 Hours
Home Base – Misty Resendiz	7 Hours

Congratulations to all Head Start Centers and Administrative Staff for an Awesome Job!

Cub Creek Center	\$56,601.54
Gap Civil Center	\$36,186.09
Lomax Center	\$13,416.37
North Wilkesboro Center	\$10,581.82
Sizemore Center	\$27,813.14
Wilkes Home- Base	\$3,790.72
No-Site	\$5,163.99



Congratulations to Billie Pruitt NCHSA Parent of the Year 2012!!!

It is with great pleasure and an honor for the Blue Ridge Opportunity Commission (BROC) Head Start Program to announce that Ms. Billie Pruitt was declared as the winner of the 2012 North Carolina Head Start Association Parent of the Year! Ms. Pruitt was awarded this great honor at the 42nd Annual North Carolina Head Start Association (NCHSA) Training Conference at the Awards Banquet on March 15, 2012. Applicants were required to submit an application along with responses to many questions pertaining to their experience with the local Head Start program. To qualify for the Parent of the Year for the local program, she had more volunteer hours than any other parent in the tri-county area of Alleghany, Ashe and Wilkes. Ms. Pruitt then competed with other parents from over fifty other Head Start programs throughout the entire state and was chosen as winner due to her responses and her devotion to Head Start. Ms. Pruitt was awarded with a trophy and a check for \$1000 at the NCHSA Awards Banquet. Over the past two years, Ms. Pruitt has been very involved with the North Wilkesboro Head Start center where she volunteers her services helping in the classroom, kitchen and other areas as needed. Billie has met the requirements through the NC Division of Child Development and Early Education (NCDEE) to substitute in the classroom setting. In addition to her regular volunteer services, Billie serves as an officer for the North Wilkesboro Head Start Parent Committee, Chairperson for the BROC Head Start Policy Council, and Secretary for the BROC Board of Directors.

Special Initiatives

Sizemore Head Start was featured in the Spotlight on the Head Start Body Start website under Success Stories. The story tells about the transformation of the Outdoor Learning Environment at Sizemore and how it helps our children to learn and be more aware of their senses. The featured spotlight included pictures that showed the improvements made on the grounds of the Sizemore Head Start Center. To view the story, please go to the following web address (you may need to look under the archive stories):

<http://www.aahperd.org/headstartbodystart/stories/headStartCenterSpotlights/>

The Wilkes Community Action Committee donated \$800 to the Wilkes Head Start Centers for early literacy initiatives. The Alleghany Planning Committee donated \$600 to the Gap Civil Head Start Program for early literacy initiatives. Books were purchased for classrooms and for children who were entering kindergarten in the fall.

The program received 3 Head Start Body Start grants of \$4,988 each, for outdoor space enhancements at the Cub Creek, Gap Civil, and Lomax Head Start Centers.

The program received a Communities Putting Prevention to Work grant award for Gap Civil Head Start in the amount of \$2,800 and for Sizemore Head Start in the amount of \$3,000. This grant will help to address the physical activity and nutritional needs of the children and the adults that influence them.

The program had 49 employees and 13 (27%) were current or former Head Start Parents.

Parent Involvement Activities

Parent/Teacher conferences were held this program year in the months of October and in March.

Head Start Center Parent Committee meetings were held monthly at four of the five centers and bi-monthly at one center.

A total of 26 meetings were held this year with the following educational topics provided by speakers:

- Children's Brain Development
- Creative Curriculum Planning
- Creating a Family Activity-Scrapbooking
- Dealing with Children's Good & Bad Behaviors
- Expanded Food & Nutrition Education Program
- Incorporating More Fruits & Vegetables in Children's Meals
- Multi-Cultural Holidays & Winter Season Crafts & Decorations
- Orientation to "Family Central Programs" at Lincoln Heights
- Orientation to Mental Health Services for Children & Families
- Parent Orientation on Program Governance
- Positive Behavior Support for Your Child
- Raising a Reader Program
- Start Safe: Fire & Burn Safety Program for Preschoolers & Families
- Team Parenting
- Transition to Kindergarten/Kindergarten Readiness

Head Start Parent Activity Projects Chosen:

- 1 Center-Chose Family Scrapbooking
- 4 Centers Chose Family Photos

Parents and Volunteers Appreciation Nights were held in April at each of the five Head Start Centers. Wilkes Home Base Parents and Volunteers were invited to attend any of the Wilkes Head Start Centers' events.

Teacher Information

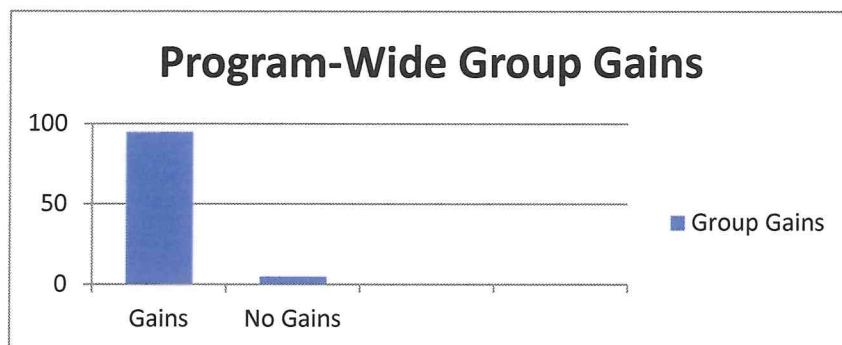
- 100% of classrooms have Teachers with Associate or Bachelor Degree
- 100% of Teacher Assistants have at a minimum the NC Early Childhood Credential and 33% have Associate Degrees.
- 50% of Teachers and 60% of Center Coordinators have a Bachelors Degree
- Average Annual Lead Teacher Salary: \$18,271.00 (with Bachelor Degree); \$11,605.00 (without Bachelor Degree)
- Average Annual Teacher Salary: \$9,600.00
- 10% of teachers are enrolled in higher degree programs.

Program Governance Training

A brief overview of Policy Council functions and responsibilities was presented at the first Parent Meeting of Program Year 45 at each Head Start Center. On October 27th, 2011, a more in depth training Power Point Presentation for new members was held in the BROC Wilkes Conference Room prior to when the first Tri-County Policy Council of PY 45 convened. The Policy Council Coordinator and/or Head Start Director provided one on one training to members as needed throughout the year. Team Leaders provided training on the Annual Program Self-Assessment to Committee Members, which included Policy Council and BROC Board members during the month of December 2011.



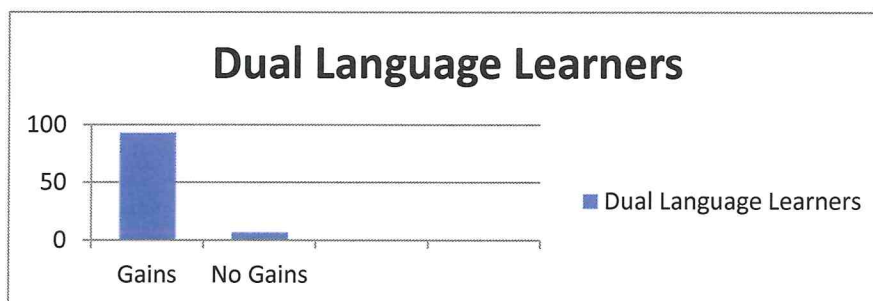
School Readiness Results



According to data entered in ChildPlus from Creative Curriculum Developmental Continuum Assessments completed from Fall 2011 – Winter 2011 – to Spring 2012, the program realized an overall 95% gain in children's abilities in Social/Emotional Development, Physical Development, Cognitive Development, and Language Development.

Average of CLASS Scores (program-wide):

- Emotional Support –7 out of 7
- Classroom Organization –6 out of 7
- Instructional Support –4 out of 7



Overall, Dual Language Learners realized a 94% in gains throughout the program year in the areas of Social/Emotional Development, Physical Development, Cognitive Development, and Language Development. Broken down center-by-center, the following is a reflection of how the dual language learners progressed throughout the year:

- Cub Creek – 25 Hispanic children: 92% gains; 8 % no gains
- Gap Civil – 14 Hispanic children: 90% gains; 10% no gains
- Lomax – 4 Hispanic children: 88% gains; 12% no gains
- North Wilkesboro – 4 Hispanic children; 99% gains; 1% no gains
- Sizemore – 2 Hispanic children: 97% gains; 3% no gains
- Home-Base – 1 Hispanic child: 95% gains; 5% gains

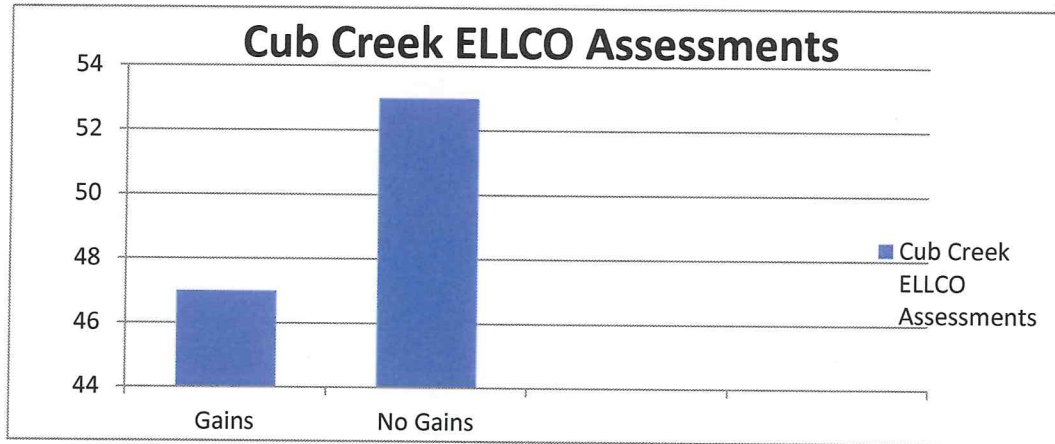


BROC Head Start

Report to the Community 2011-2012 - pg 4

Grant # 04CH2524

School Readiness Results (cont.)



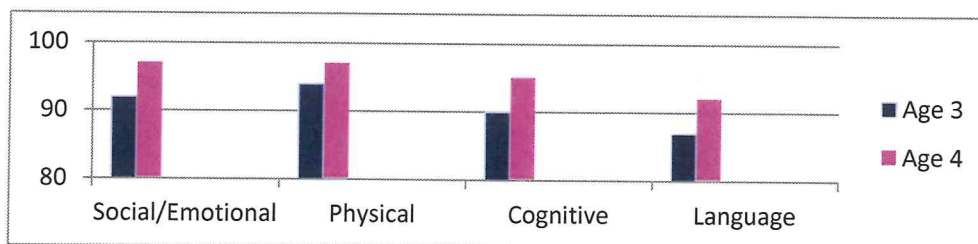
The Cub Creek Center Coordinator completed an Early Language and Literacy Classroom Observation (ELLCO) on all four classrooms during the winter schedule. From winter to spring assessment scores, the data indicates an increase of 47% of children's reading and writing skills.

When ELLCO assessment results are addressed and improvements are implemented in the classroom, improvements in children's assessment scores should be noticeable. Indicators from Creative Curriculum Developmental Continuum in reading and writing include:

- Enjoys and values reading;
- Demonstrates understanding of print concepts;
- Demonstrates knowledge of the alphabet;
- Uses emerging reading skills to make meaning from print;
- Comprehends and interprets meaning from books and other texts;
- Understands the purpose of writing; and
- Writes letters and words

The program realized an 86% increase in reading and writing skills from Creative Curriculum Developmental Continuum Assessments from Fall 2011 to Spring 2012. These results reflect that more emphasis needs to be made on book appreciation and early writing.

Group Gains Comparison by Class Age





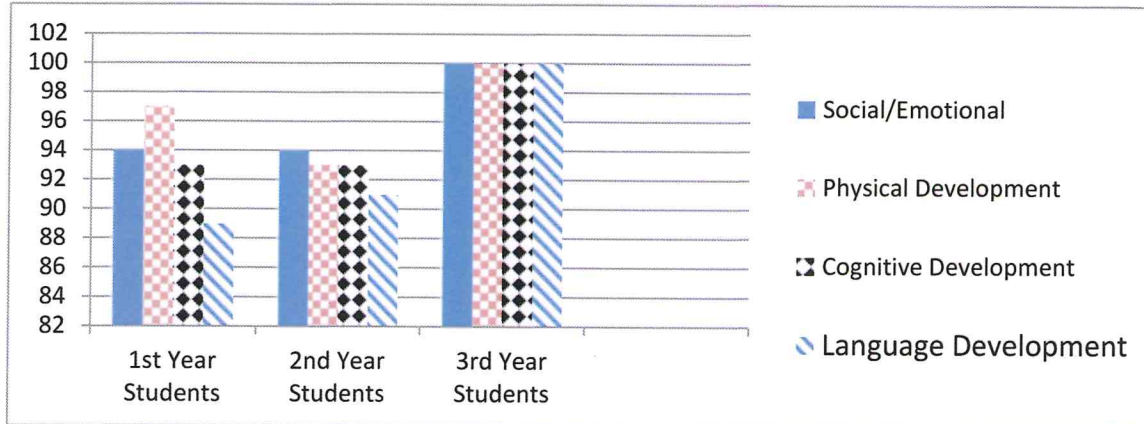
BROC Head Start

Report to the Community 2011-2012 - pg 5

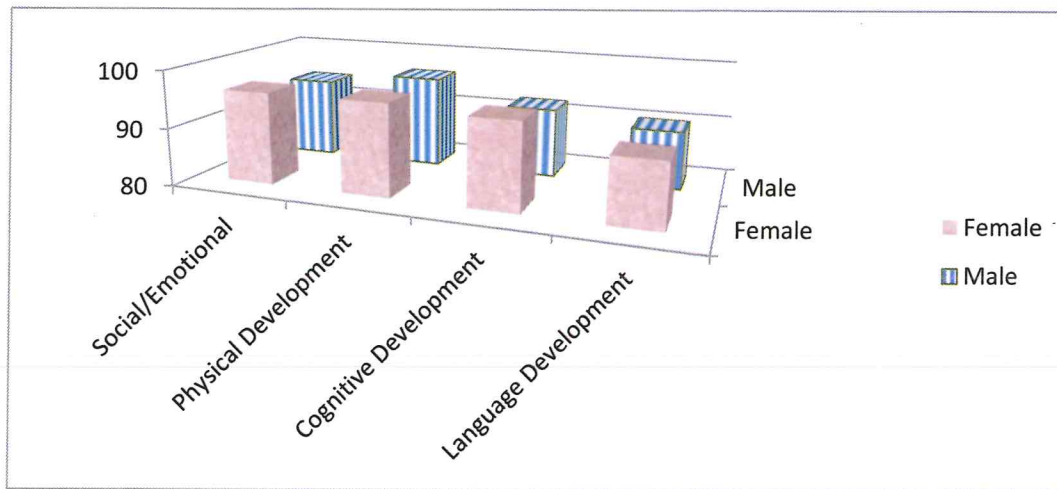
Grant # 04CH2524

School Readiness Results (cont.)

Group Gains Comparison by Participation Year



Group Gains Comparison by Gender



A School Readiness Committee was formed this program year in order to develop goals for children to meet the Head Start Child Development Early Learning Framework. The committee consisted of stakeholders including parents, staff and public school personnel. The committee met three different times to review and revise goals and to develop strategies in order for children to meet the goals. The committee met again to review, aggregate, analyze the assessment data, and develop a plan for program improvement.

BROC HEAD START Financial Report

FY 2011-2012

JUNE 2012

DHHS - ACF Funds Program Account 22	2011-2012 Allocation	YTD Expenditures	Target % Expended	Balance
Personnel	859,875.00	759,664.00	88%	100,211.00
Fringe	288,312.00	303,155.00	105%	(14,843.00)
Travel	2,000.00	1,999.81	100%	0.19
Equipment	-	0.00		0.00
Supplies	23,672.00	56,513.00	239%	(32,841.00)
Contract Services	14,000.00	5,016.00	36%	8,984.00
Facilities/Construction	-			0.00
Other:(utilities, phone, insurance licenses,maintenance, etc.)	187,941.00	266,372.00	142%	(78,431.00)
Indirect Charges	87,000.00	79,750.00	92%	7,250.00
Total	1,462,800.00	1,472,469.81	101%	(9,669.81)

DHHS - ACF Funds Program Account 22	In-kind Needed 2011-2012	Received To Date	Balance Needed
Non-Federal Match @ 20%	365,700.00	216,969.00	41% 148,731.00

DHHS - ACF Funds Program Account 20	2011-2012 Allocation	YTD Expenditures	Target % Expended	Balance
Staff Training & Technical Assistance	20,807.00	20,807.00	100%	0.00

DHHS - ACF Funds Program Account 20	In-kind Needed 2011-2012	Received To Date	Balance Needed
Non-Federal Match @ 20%	5,202.00	5,202.00	0% 0.00

Through 6/30/2012	Previous Month Balance	Received To Date	Expensed To Date	Ending Month Balance
Revenue/Expenditures				
USDA (Food Program) Reimb.		86,633.82	79,501.93	7,131.89
Interest Income - Checking		5.76	5.76	0.00
Local Funds (Wilkes Co.)		1,280.01	1,280.01	0.00
Local Funds, (Ashe, Alleghany Co.)		120.00	120.00	0.00
Miscellaneous Receipts		10,000.24	10,000.24	0.00
Wilkes Community Action - Gift	0.00	800.00	800.00	0.00
Alleghany Planning Committee-Gift	0.00	600.00	600.00	0.00
	0.00	99,439.83	92,307.94	7,131.89

HEAD START - General Fund

Through 6/30/2012	Balance Forward	Receipts	Expenses	Balance
Wilkes County NC PreK (Reimb)	92,626.07	2,844.00 May	49,323.00 0.00	
Ashe County NC PreK (Reimb)		7,632.00 May	0.00	
NC PreK Salaries/Fringe				
Wilkes County DSS Subsidy			0.00	
Surry County DSS Subsidy				
Other Expenses		169.62		
Appalachian District Health (CPPW Grant) Gap Civil & Sizemore		0.00		
American Alliance (Head Start Body Start Grant)		0.00	0.00	
Summer Fees Collected		0.00	0.00	
Totals		10,645.62	49,323.00	53,948.69



BROC Head Start

Monthly Activities Report – June 2012

Enrollment

Center or Home Based Option	Actual Enrollment During Month	Terminated During the Month	Average Days Terminated Slots Were Vacant
Cub Creek	n/a	n/a	n/a
Gap Civil	n/a	n/a	n/a
Lomax	n/a	n/a	n/a
North Wilkesboro	n/a	n/a	n/a
Sizemore	n/a	n/a	n/a
Home Based	n/a	n/a	n/a
Total Head Start Slots	n/a	n/a	n/a
NC Pre-K Slots	n/a		
Cub Creek	n/a		
Sizemore	n/a		

At the end of June 2012, a total of 207 children have been enrolled; 24 children dropped from the program during the 32 weeks of classroom operation; 82 children remained on the waiting list for Head Start

DISABILITIES SERVICES

The Disability and Transition Manager attended the Wilkes LICC Meeting on June 13, 2012.

The Disability/Transition Services Manager updated the tri-county Interagency Agreements and mailed to the Alleghany, Ashe, and Wilkes County Public School Exceptional Children's Programs for Program Year 2012-2013.

Due to having no classes for the month of June there is no children's information to share concerning Disabilities and Transitions.



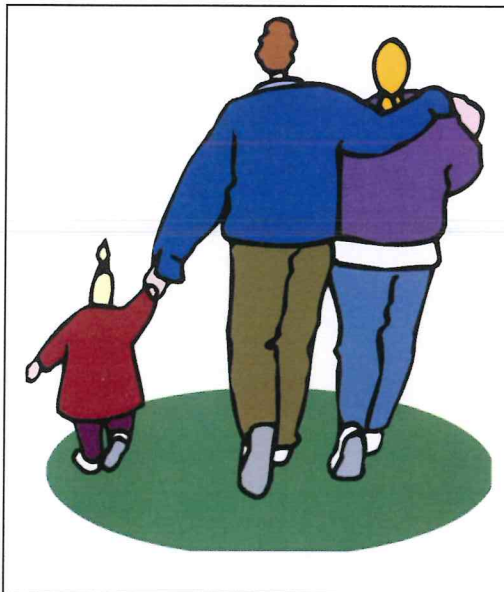
FAMILY PARTNERSHIP SERVICES

Agencies/programs referrals made to the following:

- BROC Wilkes "Crisis Intervention & Food"
- Child Care Resource & Referral-Wilkes "Child Care"

❖ **Meetings/activities of Family & Community Partnership Services Manager this month:**

- ◆ *June 1: Family/Community Partnership Services Manager completed the second day of a two-day intensive Child Fatality Review at the Wilkes Department of Social Services.*
- ◆ *June 4: Family/Community Partnership Services (FCPS) Manager completed required sections of the annual Program Information Report-PIR.*
- ◆ *June 12: FCPS Manager attended the quarterly meeting of the Alleghany Local Interagency Coordinating Council (LICC).*
- ◆ *June 13: FCPS Manager attended the monthly meeting of the Wilkes Council for the Early Years-Local Interagency Coordinating Council (LICC).*
- ◆ *June 14: FCPS Manager assisted with serving beverages and clean-up at the annual BROC Board meeting.*
- ◆ *June 15: FCPS Manager attended the quarterly meeting of the Child Fatality Prevention Team at the Wilkes Health Department.*
- ◆ *June 1-29: FCPS Manager received referrals for children from the Wilkes County Exceptional Children's Program, Ashe and Alleghany County's Health Departments' Child Care Coordinator and individual families contacting the BROC Wilkes office by phone or office visit.*



STAFF DEVELOPMENT

On June 5-6 the Sizemore Bus Driver/Custodian participated in two days of the recertification classroom training to renew his Commercial Driver's License (CDL) which is required to drive a school bus in NC. Due to a family emergency he was unable to complete the third day of classroom instruction. He will be given the opportunity to take the required written test in July or August and complete the recertification process.

On June 7-8 the Family/Community Partnership Services Manager participated in two days of national Head Start training in Macon County NC entitled-"Parent Engagement: The Family Partnership Journey Continues".

The Health/Mental Health/Nutrition Manager attended the WCAC Meeting on June 7, 2012.

The Cub Creek Center Coordinator/Disabilities Manager attended the WILKES LICC meeting on June 13th. The guest speaker was Bethany Marshall who spoke on the different services for the High Country First in Families.

The Head Start Director/Education Services Manager attended the Annual BROCC Board Meeting on June 14th.

The Head Start Director/Education Services Manager, the Family/Community Partnership Services Manager, the Health/Mental Health/Nutrition Manager and the Disabilities Manager/Cub Creek Center Coordinator attended the Region IV Fiscal Management Institute June 18th- 21st in Atlanta, GA. Training workshops included "Competition in the Nonprofit Sector"- Opening Session; "A Comprehensive Approach to Serving Dual Language Learners and Families - Part 1 & 2"; "NC State Forum"; "Grantee Focus Seminar"; "Introduction to Fundraising Planning"; "The Creative Leader"; "Building Bridges between Data and Positive Child Outcomes: Coaching Teachers for Improved Learning"; "Financial Stability Strategies for Head Start Families", "Coalition Building: Connecting Agencies, Programs & Resources to Maximize Benefits for Children and Families", "Engaging Fathers in School Readiness" and "It's Time: The Parent, Family and Community Engagement Framework with a Fiscal Perspective"; and "A Birth to 5 Perspective on School Readiness (Part 1 & 2)"; "Emergency Response at Home and Work".

The Head Start Director/Education Services Manager attended Alleghany NC Pre-K Committee Meeting on June 26th and attended the Wilkes NC Pre-K Committee Meeting on June 28th.

EDUCATION SERVICES

On June 15th, the Head Start Director/Education Services Manager participated in the 3rd School Readiness Conference Call with the Region IV Program Specialist.

The Education Services Manager has been actively compiling the Program Information Report for Program Year 45 2011-2012.

The Education Services Manager has been busy preparing for Program Year 46 2012-2013 and for staff training for Pre-service in August.

BROC HEAD START Financial Report

FY 2011-2012

JUNE 2012

DHHS - ACF Funds Program Account 22	2011-2012 Allocation	YTD Expenditures	Target % Expended	Balance
Personnel	859,875.00	759,664.00	88%	100,211.00
Fringe	288,312.00	303,155.00	105%	(14,843.00)
Travel	2,000.00	1,999.81	100%	0.19
Equipment	-	0.00		0.00
Supplies	23,672.00	56,513.00	239%	(32,841.00)
Contract Services	14,000.00	5,016.00	36%	8,984.00
Facilities/Construction	-			0.00
Other:(utilities, phone, insurance licenses,maintenance, etc.)	187,941.00	266,372.00	142%	(78,431.00)
Indirect Charges	87,000.00	79,750.00	92%	7,250.00
Total	1,462,800.00	1,472,469.81	101%	(9,669.81)

DHHS - ACF Funds Program Account 22	In-kind Needed 2011-2012	Received To Date	Balance Needed
Non-Federal Match @ 20%	365,700.00	216,969.00	41% 148,731.00

DHHS - ACF Funds Program Account 20	2011-2012 Allocation	YTD Expenditures	Target % Expended	Balance
Staff Training & Technical Assistance	20,807.00	20,807.00	100%	0.00

DHHS - ACF Funds Program Account 20	In-kind Needed 2011-2012	Received To Date	Balance Needed
Non-Federal Match @ 20%	5,202.00	5,202.00	0% 0.00

Through 6./30/2012	Previous Month Balance	Received To Date	Expensed To Date	Ending Month Balance
Revenue/Expenditures				
USDA (Food Program) Reimb.		86,633.82	79,501.93	7,131.89
Interest Income - Checking		5.76	5.76	0.00
Local Funds (Wilkes Co.)		1,280.01	1,280.01	0.00
Local Funds, (Ashe, Alleghany Co.)		120.00	120.00	0.00
Miscellaneous Receipts		10,000.24	10,000.24	0.00
Wilkes Community Action - Gift	0.00	800.00	800.00	0.00
Alleghany Planning Committee-Gift	0.00	600.00	600.00	0.00
	0.00	99,439.83	92,307.94	7,131.89

HEAD START - General Fund

	Balance Forward	Receipts	Expenses	Balance
Through 6/30/2012	92,626.07		49,323.00	
Wilkes County NC PreK (Reimb)		2,844.00 May	0.00	
Ashe County NC PreK (Reimb)			0.00	
NC PreK Salaries/Fringe		7,632.00 May		
Wilkes County DSS Subsidy			0.00	
Surry County DSS Subsidy				
Other Expenses		169.62		
Appalachian District Health (CPPW Grant) Gap Civil & Sizemore		0.00		
American Alliance (Head Start Body Start Grant)		0.00	0.00	
Summer Fees Collected		0.00	0.00	
Totals		10,645.62 ****	49,323.00	53,948.69

ACCOUNT #		BROC - HEADSTART		LOWE'S BUSINESS ACCOUNT		P.O. # : JIM	
INVOICE # : 09890		DATE OF SALE : 120502		AUTHORIZATION : 000745		STORE # : 2255	
TRANSACTION # : 0						REGISTER # :	
S.K.U	DESCRIPTION	QUANTITY	UNIT	PRICE	EXT. PRICE		
00000000093161	QT ROUNDUP SUPER CONCENTR	1.000	EA	\$42.72	\$42.72		
000000000200962	POLY RED PISTOL GRIP NOZZ	3.000	EA	\$2.83	\$8.49		
000000000145743	SPEC WASP & HORNET TWINPA	1.000	EA	\$5.20	\$5.20		
000000000155670	PROMOTIONAL DISCOUNT	1.000	EA	\$0.00	\$0.00		
SUB \$58.41		TAX \$3.81		TOTAL INVOICE		\$60.22	
				CREDITS TOTAL		\$0.00	
				BALANCE DUE		\$60.22	

ACCOUNT # : 7		BROC - HEADSTART		LOWE'S BUSINESS ACCOUNT		P.O. # : JIM	
INVOICE # : 01309		DATE OF SALE : 120508		AUTHORIZATION : 000717		STORE # : 2255	
TRANSACTION # : 0						REGISTER # :	
S.K.U	DESCRIPTION	QUANTITY	UNIT	PRICE	EXT. PRICE		
00000000004030	CONCRETE MIX 40# QUIKRETE	6.000	BA	\$2.83	\$16.98		
000000000046905	2X4X8 ACQ TOP CHOICE TREA	2.000	EA	\$3.73	\$7.46		
000000000155670	PROMOTIONAL DISCOUNT	1.000	EA	\$0.00	\$0.00		
SUB \$24.44		TAX \$1.65		TOTAL INVOICE		\$26.09	
				CREDITS TOTAL		\$0.00	
				BALANCE DUE		\$26.09	

ACCOUNT # :		BROC - HEADSTART		LOWE'S BUSINESS ACCOUNT		P.O. # : NO	
INVOICE # : 09578		DATE OF SALE : 120515		AUTHORIZATION : 000718		STORE # : 701	
TRANSACTION # : 0						REGISTER # :	
S.K.U	DESCRIPTION	QUANTITY	UNIT	PRICE	EXT. PRICE		
000000000154836	QT ROUNDUP CONCENTRATE	1.000	EA	\$18.92	\$18.92		
000000000155670	PROMOTIONAL DISCOUNT	1.000	EA	\$0.00	\$0.00		
SUB \$18.92		TAX \$1.32		TOTAL INVOICE		\$20.24	
				CREDITS TOTAL		\$0.00	
				BALANCE DUE		\$20.24	

ACCOUNT # :		BROC - HEADSTART		LOWE'S BUSINESS ACCOUNT		P.O. # :	
INVOICE # : 09907		DATE OF SALE : 120522		AUTHORIZATION : 000745		STORE # : 701	
TRANSACTION # : 0						REGISTER # :	
S.K.U	DESCRIPTION	QUANTITY	UNIT	PRICE	EXT. PRICE		
000000000154836	QT ROUNDUP CONCENTRATE	2.000	EA	\$18.92	\$37.84		
000000000155670	PROMOTIONAL DISCOUNT	1.000	EA	\$0.00	\$0.00		
SUB \$37.84		TAX \$2.65		TOTAL INVOICE		\$40.49	
				CREDITS TOTAL		\$0.00	
				BALANCE DUE		\$40.49	

ACCOUNT # :		BROC - HEADSTART		LOWE'S BUSINESS ACCOUNT		P.O. # : JOM	
INVOICE # : 01827		DATE OF SALE : 120530		AUTHORIZATION : 000725		STORE # : 2255	
TRANSACTION # : 0						REGISTER # :	
S.K.U	DESCRIPTION	QUANTITY	UNIT	PRICE	EXT. PRICE		
00000000010385	CONCRETE MIX 80# QUIKRET	3.000	BA	\$3.77	\$11.31		
000000000155670	PROMOTIONAL DISCOUNT	1.000	EA	\$0.00	\$0.00		
SUB \$11.31		TAX \$0.76		TOTAL INVOICE		\$12.07	
				CREDITS TOTAL		\$0.00	
				BALANCE DUE		\$12.07	

Your Business Credit Card Statement

Page 1 of 2

BILLING CYCLE INFORMATION

Previous Balance		\$1,875.88
Payments	-	\$1,875.88
Credits	-	\$0.00
Purchases & Other Charges	+	\$1,895.92
Cash Advances	+	\$0.00
FINANCE CHARGES	+	\$0.00
New Balance	=	\$1,895.92
Closing Date		06/18/2012

ACCOUNT SUMMARY

Account Number	
Total Credit Line	\$17,500.00
Available Credit	\$12,026.00
Available Cash	\$12,026.00
Amount Over Credit Limit	\$0.00
Amount Past Due	\$0.00
Days In Billing Cycle	31
Minimum Payment Due	\$50.00
Payment Due Date	07/13/2012

Toll Free
800-836-8562

Contact Information
Outside U.S. (Call Collect)
407-762-7102

P.O. Box 4997
Orlando, FL 32802-4997

PREVIOUS BALANCE	874.94
EARNED THIS PERIOD	27.17
REDEEMED THIS PERIOD	.00
NEW CASH BACK REWARDS BALANCE	902.11

TRANSACTIONS

Trans Date	Post Date	Reference Number	Merchant Name or Transaction Description	Amount Credit	Amount Charge
06-04	06-04	7422307HQ010V4FHA	PAYMENT - THANK YOU	1,875.88	
			TOTAL		\$1,875.88-
05-21	05-23	2442733GZLM853BD4	AMERICA'S QUICK LUBE I NORTH WILKESB NC		38.93
06-11	06-13	2442733HLLM858B1R	AMERICA'S QUICK LUBE I NORTH WILKESB NC		34.39
			TOTAL		\$73.32
06-06	06-07	2444500HFHEY3B9LN	CRACKER BARREL #141 ASHEV ASHEVILLE NC		12.04
06-06	06-08	2469216HF00N8GVBA	FATZ CAFE 49 FRANKLIN NC		12.97
06-07	06-10	2416407HG7DN0KZHR	SUBWAY 00058156 FRANKLIN NC		1.48
06-07	06-10	2474455HG3S6BMG7V	Fat Buddies 828-3494743 NC		25.89
06-08	06-10	2419304HGS66E9JP1	MICROTEL INN & SUITES FRANKLIN NC		141.98
06-08	06-10	2431605HHFZ2TL8XM	SHELL OIL 57540757705 FRANKLIN NC		59.90
06-08	06-10	2444500HH2XAV3V86	TGI FRIDAY'S #1738 ASHVILLE NC		30.00
06-12	06-14	2416407HMQP0EB0DZ	WILCO 231 00002311 N WILKESBORO NC		32.40
06-14	06-17	2444500HP2XQQETDT	DOLLAR-GENERAL #2394 NORTH WILKESB NC		5.78
			TOTAL		\$322.44
06-13	06-14	2469216HM00D3DK6R	LOWES #00701* WILKESBORO NC		9.43
06-15	06-17	2438895HPWGN8SMH4	BLEVINS BLDG SUPPLY 3 SPARTA NC		170.53
06-15	06-17	2431605HRFYJA7ZFB	SHELL OIL 91002572754 MILLERS CREEK NC		67.57
			TOTAL		\$247.53
05-25	05-27	2443105H305JVWPAT	MURPHY EXPRESS 8522 ELKIN NC		56.00
06-12	06-14	2416407HMQP0EJQ51	WILCO 321 00003210 SPARTA NC		41.02
			TOTAL		\$97.02

PAID

Brenda W. Brown
See reverse for additional information.

5207 2ED 1

18

7

Page 1 of 2

4552

6800

YN49

0003

120618 01AQ5207

949

▼PLEASE DETACH HERE AND RETURN BOTTOM PORTION WITH YOUR PAYMENT▼

Your Business Credit Card Statement

TRANSACTIONS

Trans Date	Post Date	Reference Number	Merchant Name or Transaction Description	Amount	
				Credit	Charge
05-21	05-23	2416407GZ31X7M1QG	STAPLES 00106203 WILKESBORO NC		11.76
05-24	05-24	2469216H100N6HHPH	AMAZON MKTPLACE PMTS AMZN.COM/BILL WA		35.88
05-24	05-25	2416407H13203RRDW	STAPLS9228334140000 800-3333330 CA		68.32
05-24	05-25	2469216H100RH35V9	Amazon.com AMZN.COM/BILL WA		66.54
05-30	06-01	2432688H8KQ8BD3ZW	ADVANCE AUTO PARTS #4137 N WILKESBORO NC		65.76
06-12	06-13	2441295HL61AKXAKA	CONSTRUCT PLAYTHNGS.COM 800-448-7830 MO		581.34
			TOTAL		\$829.60
06-08	06-11	2407105HJ4K7R509H	RIVER ROCK GRILL SPARTA NC		8.54
06-14	06-15	2442733HNLJYJ3H6KF	FOOD LION #1048 N WILKESBORO NC		101.32
			TOTAL		\$109.86
05-18	05-20	2439121GV53YR3GLQ	PBGFS5911905*003R 800-732-7222 CT		216.15
			TOTAL		\$216.15

Finance Charge Detail	Average Daily Balance	Daily Periodic Rate (may vary)		FINANCE CHARGE	Corresponding ANNUAL PERCENTAGE RATE
Purchases	0.00	.02257%	V	0.00	8.24%
Cash Advances	0.00	.04448%	V	0.00	16.24%

Combined Annual Percentage Rate for this Billing Cycle 16.24%



Click 'n' Pull®

Get what you need, when you need it.

Let us do the shopping for you! Maximize your time and savings with **Click 'n' Pull** for all your business needs.

- 1 Log in to your online Member account and select your local Club at SamsClub.com/clicknpull.
- 2 Submit your shopping order by 5 pm.
- 3 We'll pull your items and have them ready for pickup the next day!



You click. We pull. You save.

Sam's Club® Credit

BROC HEAD START
Account Number: 120607 9280 5000 MP17 01EH6709

Visit us at samsclub.com/credit
Member Service: 1-800-203-5764

Summary of Account Activity	
Previous Balance	\$610.11
- Payments	\$610.11
+ Purchases/Debits	\$84.74
New Balance	\$84.74
Credit Limit	\$2,500.00
Available Credit	\$2,415.00
Statement Closing Date	06/07/2012
Days in Billing Cycle	31

Payment Information	
New Balance	\$84.74
Total Minimum Payment Due	\$50.00
Payment Due Date	07/02/2012

Transaction Summary				
Tran Date	Post Date	Reference Number	Description of Transaction or Credit	Amount
05/25	05/25	P928000H501LB8ALO	HANES MALL BLVD WINSTON-SALEMNC	\$84.74
			TOTAL FOR AUTHORIZED BUYER NO 10	\$84.74
05/26	05/26	P928000H501QEW7T6	PAYMENT - THANK YOU	(\$610.11)

Interest Charge Calculation					
Your Annual Percentage Rate (APR) is the annual interest rate on your account.					
Type of Balance	Expiration Date	ANNUAL PERCENTAGE RATE	Balance Subject to Interest Rate	Interest Charge	Balance Method
Regular Purchases	N/A	21.90% (v)	\$0.00	\$0.00	2D
(v) = variable rate					

PAYMENT DUE BY 5 P.M. (ET) ON THE DUE DATE.

NOTICE: We may convert your payment into an electronic debit. See reverse side for details, Billing Rights and other important information.

SERVICE: For Account Information log on to samsclub.com/credit. This account is not
for cash. Account code is: 7AUN405. Or call toll-free 1-800-203-5764.

120607

PAGE 1 of 3

9280 5000 MP17 01EH6709

21079

INVOICE#: 004518

AUTHORIZATION #: 000380

CLUB #: 8228

REFERENCE #: P928000H501LB8ALO

TRANSACTION #: 4518

REGISTER #: 2

All for
PROC

<u>S.K.U</u>	<u>DESCRIPTION</u>	<u>QUANTITY</u>	<u>UNIT</u>	<u>PRICE</u>	<u>EXT. PRICE</u>
000011485	HERSHEY ALMOND	1.000	EA	\$18.6500	\$18.65
004239218	KELLOGG FRUIT SNACKS	2.000	EA	\$6.8400	\$13.68
005333735	FL CHEETOS CRUNCHY	1.000	EA	\$11.9800	\$11.98
005584902	FL MS VICKIES VARITY	1.000	EA	\$11.6600	\$11.66
021631702	MILKY WAY CARAMEL	1.000	EA	\$13.3200	\$13.32
024551068	SMART MIX	1.000	EA	\$11.6600	\$11.66
SUB \$80.95		TAX \$3.79		TOTAL INVOICE	\$84.74
				CREDITS TOTAL	\$0.00
				BALANCE DUE	\$84.74

10-1-24